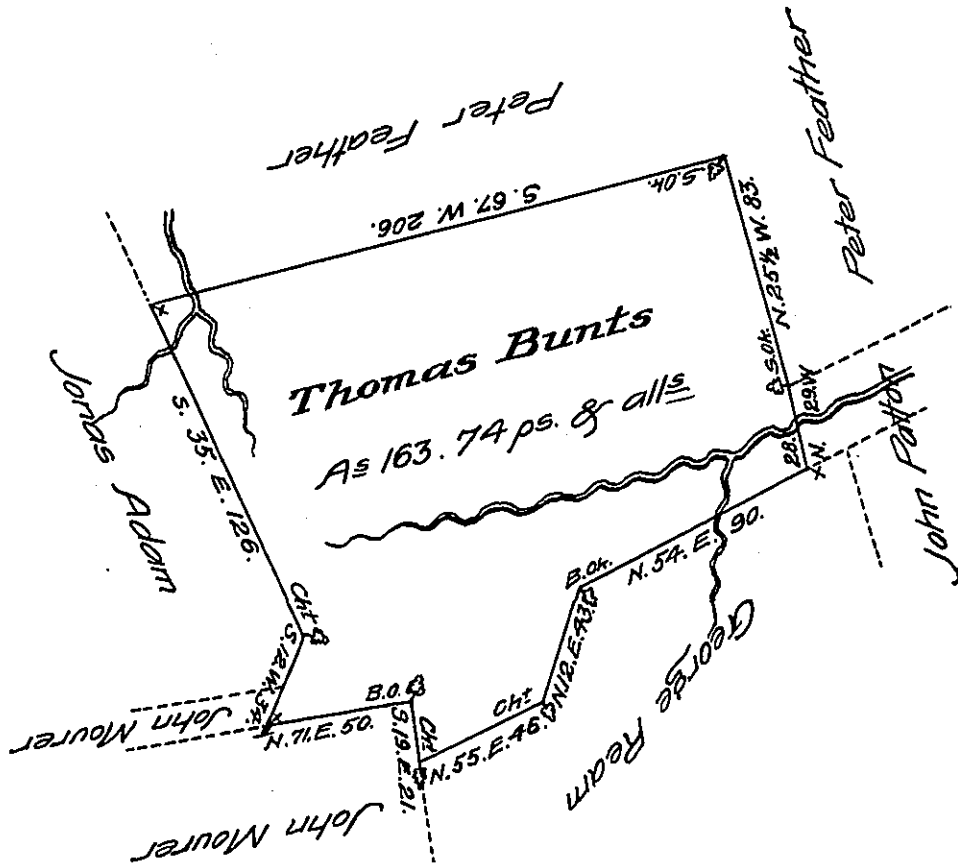


FORM NO 1.



Situate in Cumru township, Berks County Containing One hundred and sixty three acres, seventy four perches and allowance of 6 ~~sq~~ Ct. Surveyed on an Application No 3169 dated the 22<sup>d</sup> day of March 1768 granted to Thomas Bunts (alias Punch) as appears from Thomas Lightfoots survey amongst James Scull's papers  
October 8<sup>th</sup> 1828.

Gabriel Hiester, Esquire }  
Surveyor General }

Matthias S. Richards D.S.

This Survey is part of 1039<sup>±</sup> & all<sup>±</sup> originally surveyed on a Warrant dated August 6, 1765 granted to John Patton. patented to Elizabeth Lightfoot May 28<sup>th</sup> 1782. B - 4 - 15.

M.S. Richards D.S.

IN TESTIMONY that the above is a copy of the original remaining on file in the Department of Internal Affairs of Pennsylvania, made conformably to an Act of Assembly approved the 16th day of February, 1833, I have hereunto set my Hand and caused the Seal of said Department to be affixed at Harrisburg, this first day of September 1908.

*Nancy Howell*  
Secretary of Internal Affairs.